

Windrose Plot Application

The application is best viewed using a resolution 1024 x 768 pixels. Please set your resolution to this if it is not set so.

Windrose Plot Application is an application to Draw Windrose Plot of Wind Monitor Data

Windrose Plot Application is a fully operational wind rose program for meteorological data. It provides visual wind rose plots, frequency analysis, and plots for several meteorological data formats.

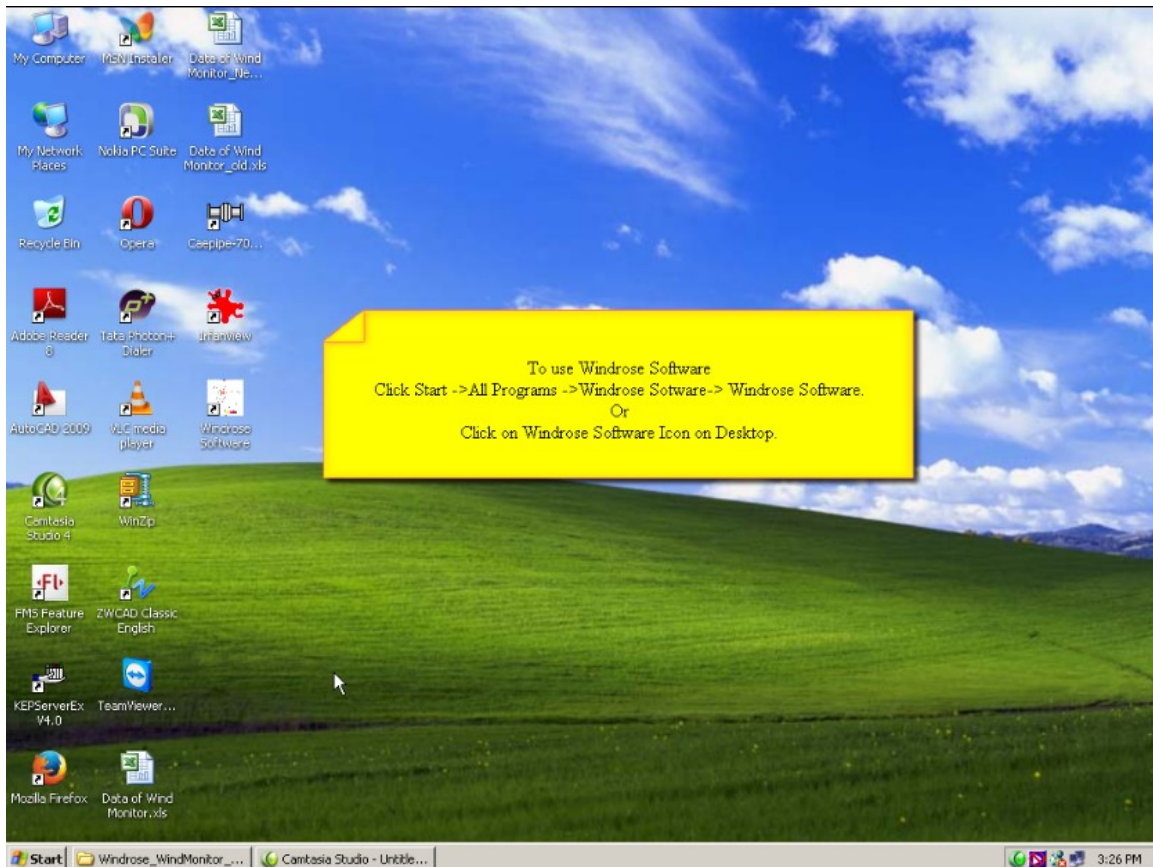
A wind rose depicts the frequency of occurrence of winds in each of the specified wind direction sectors and wind speed classes for a given location and time period.

The usage of this application is quit user friendly and is self explanatory.

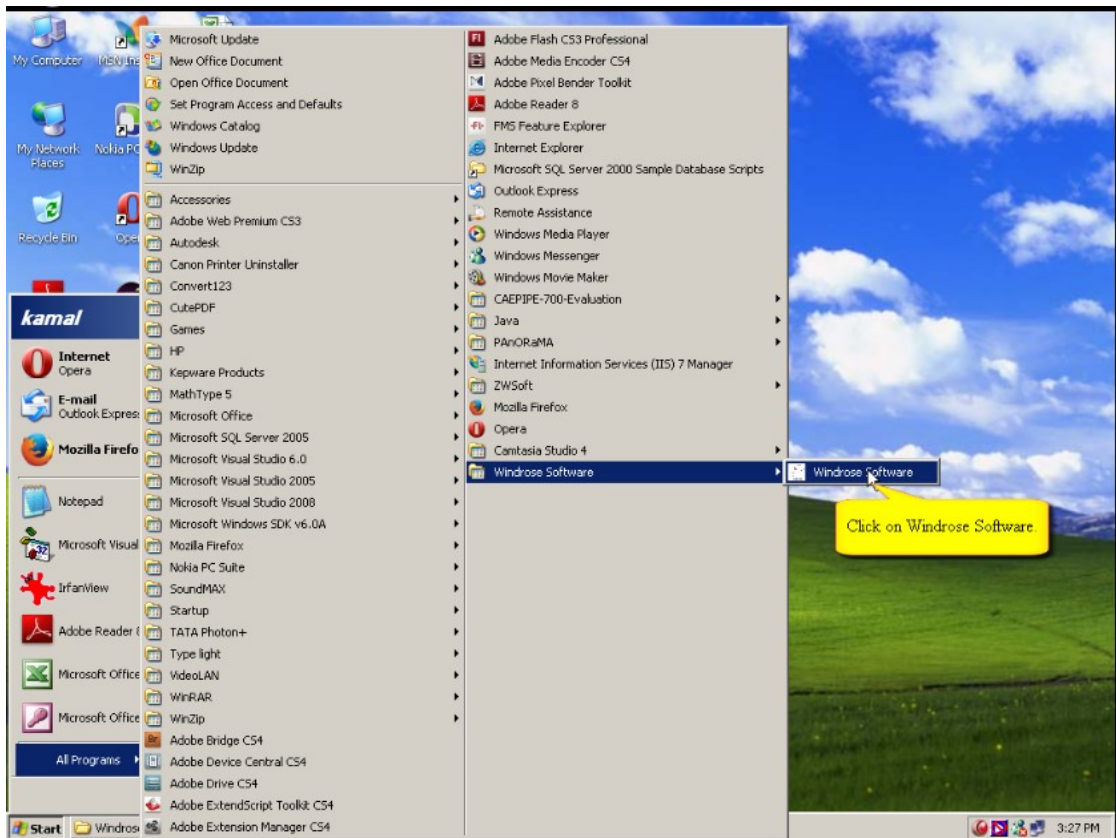
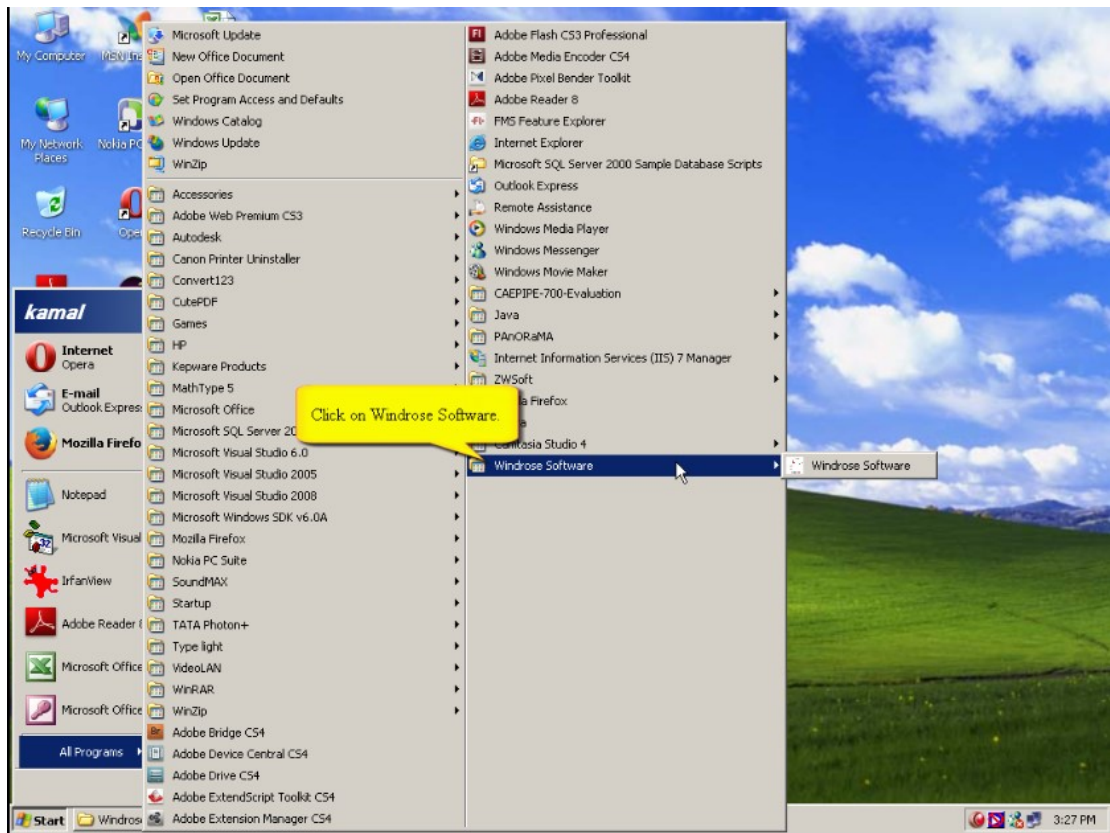
This document gives a brief description of the usage of the application.

To Run Windrose Software
Click Start ->All Programs ->Windrose Sotware-> Windrose Software.
Or
Click on Windrose Software Icon on Desktop.

For more help please view the following Screen Shots

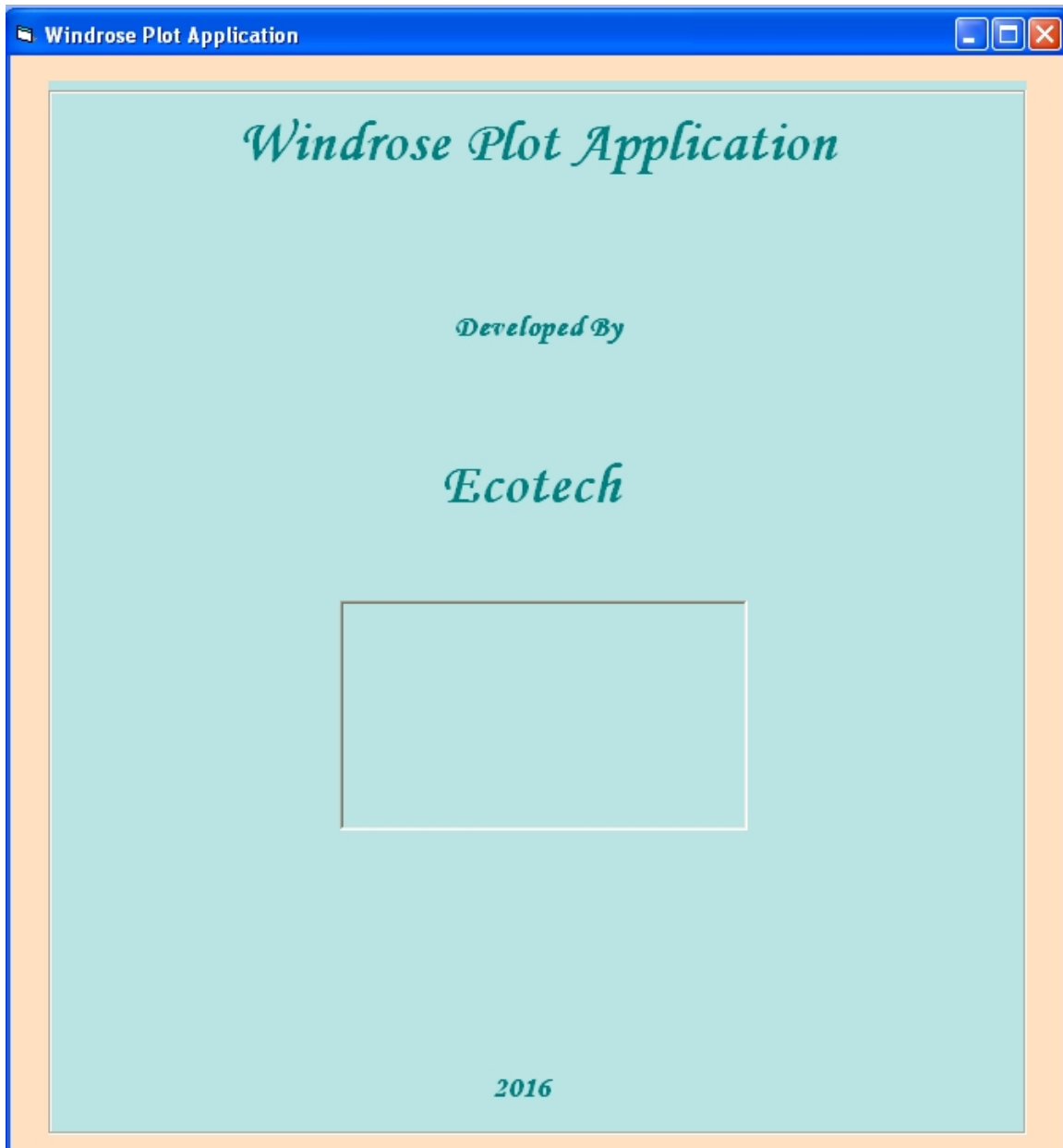






The application opens with the Splash Start Window displayed as follows.

The Splash Start Window



After some seconds The Login Window will be displayed automatically as given below

The Login Window

Windrose Plot Application

Developed By

Ecotech

2016

Login Here

Login ID

Password

Ok

Change Password

Enter Login ID and Password in respective Text Boxes then Click on “Ok” button. After clicking “Ok” button Windrose Plot Main Screen will be displayed

If you want to change your Login Password please click on “Change Password” button displayed on the bottom of Login Window. After Clicking “Change Password” button the Change Password Window will be displayed as follows.

The Change Password Window

Change Password - Windrose Plot Application

Windrose Plot Application

Developed By

Ecotech

2016

Change Password

Login ID

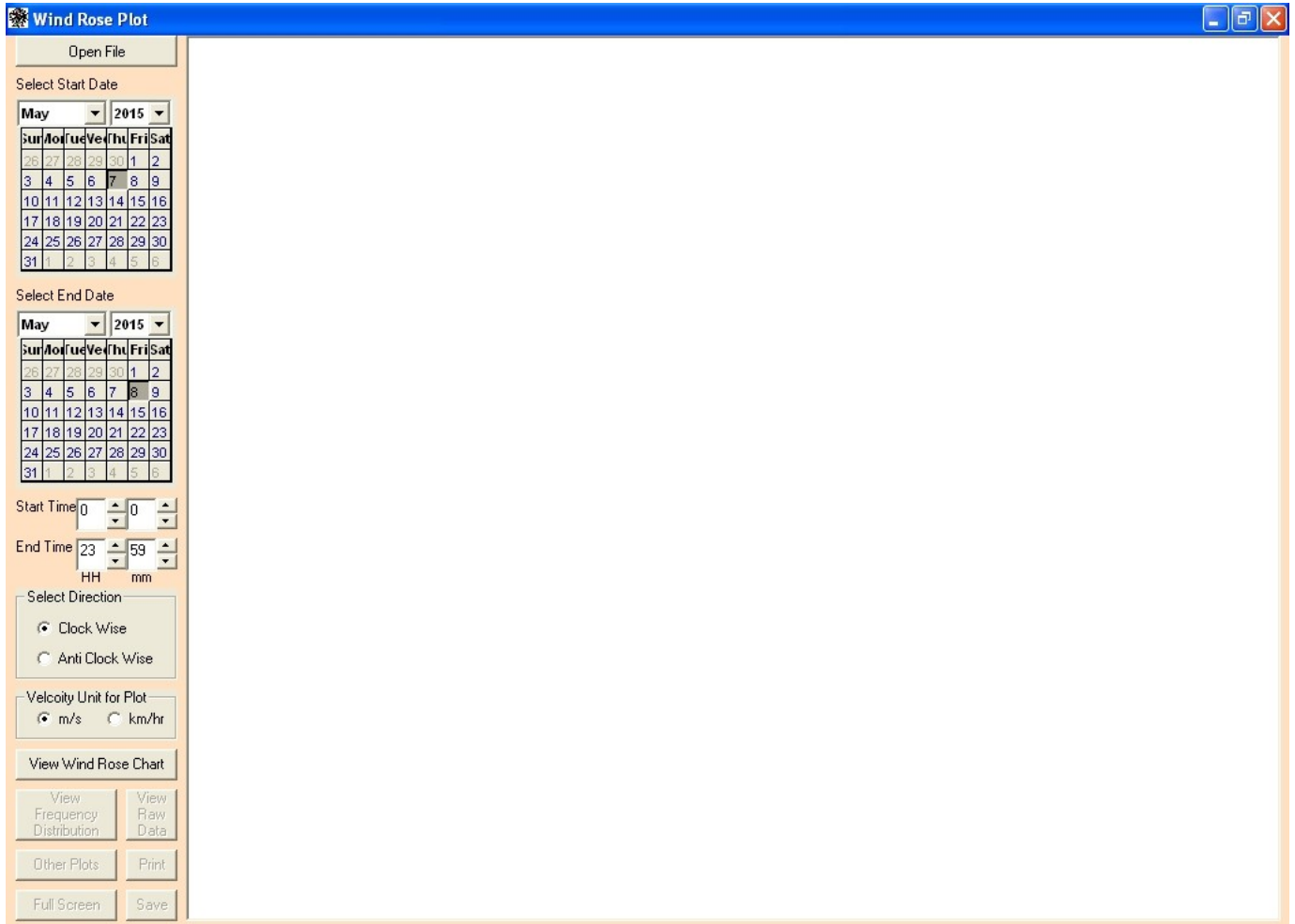
Old Password

New Password

Change Cancel

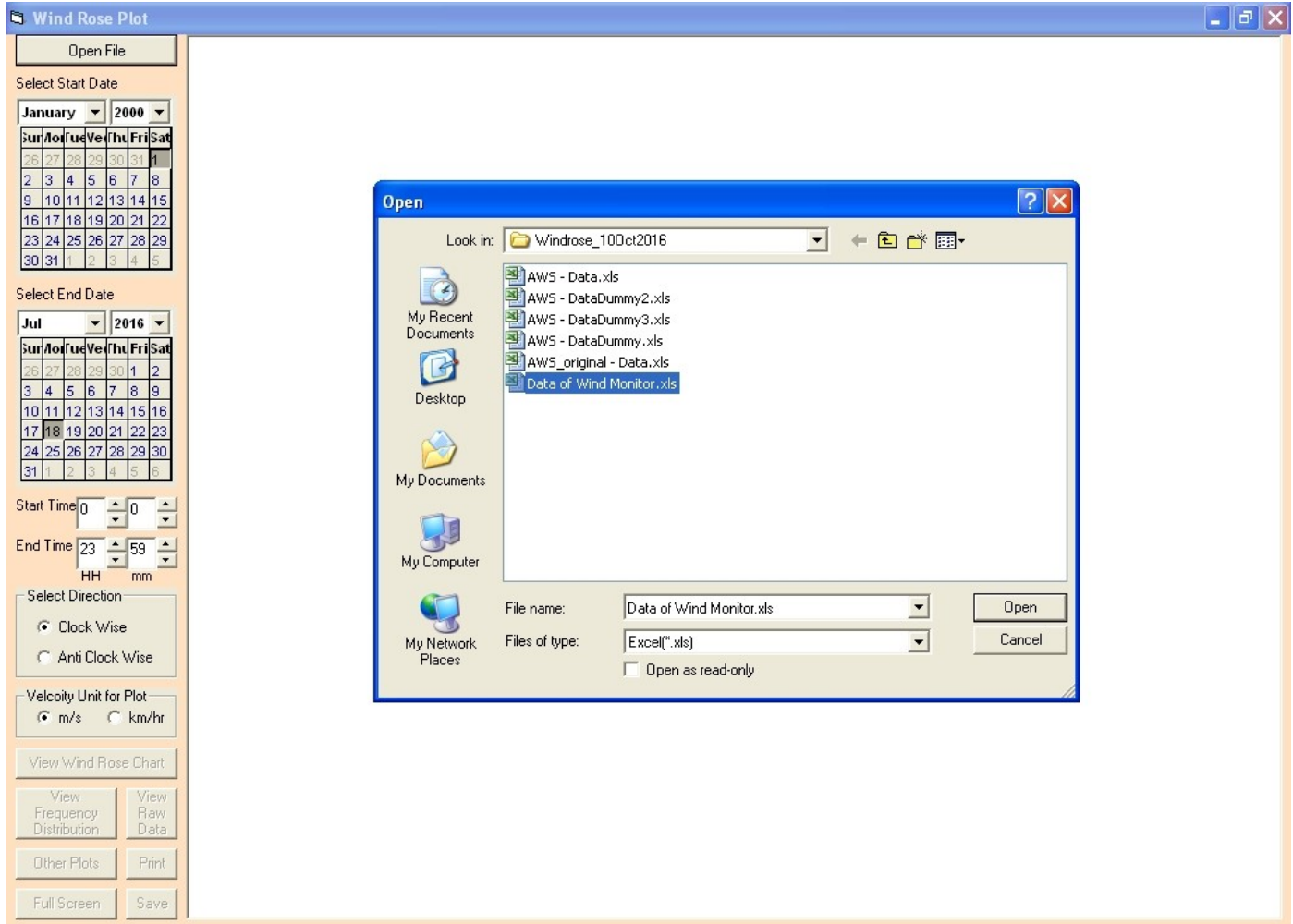
Enter Login ID, Old Password and New Password in respective Text Boxes and Click on “Change” button. After clicking “Change” button your Login Password will be changed and you will get a message that your password has been change and you will get The Login Window again.

Enter Login ID and Password in respective Text Boxes and Click on “Ok” button on Login Window to Login the Windrose Software. After clicking “Ok” button Windrose Plot Main Screen will be displayed as follows.

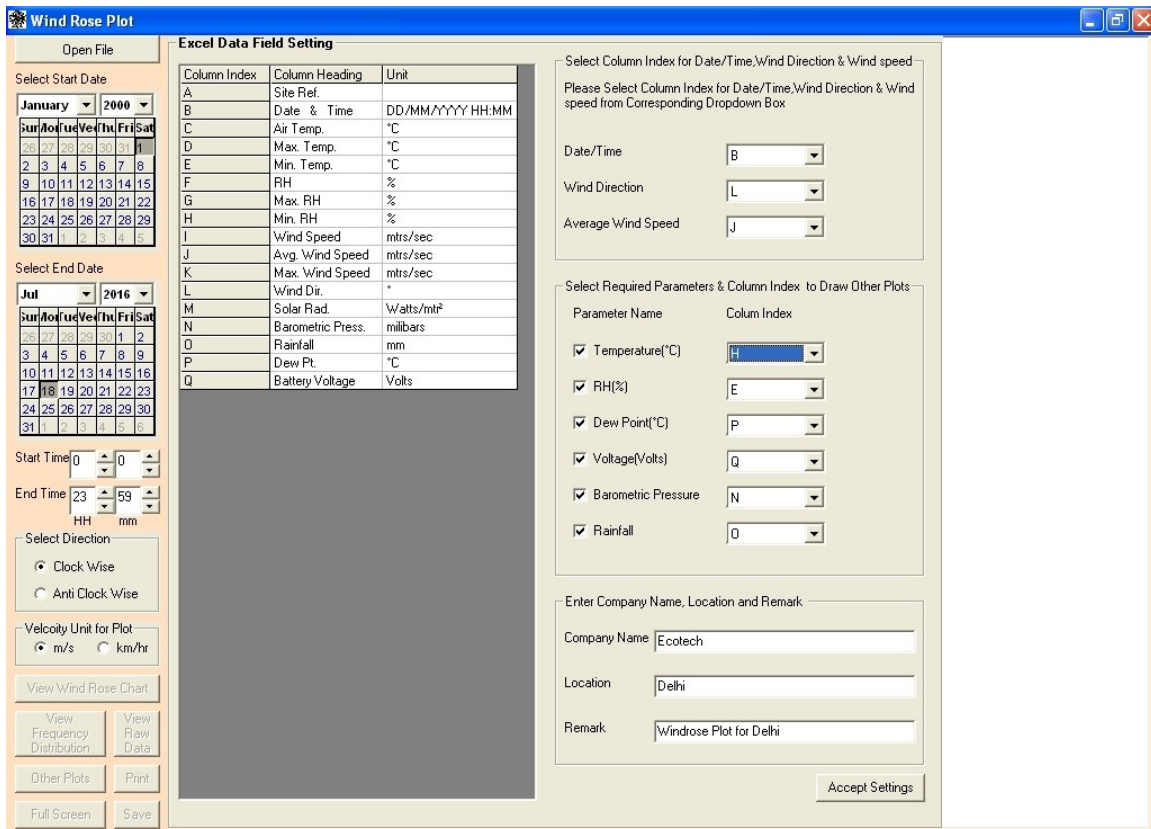


Click on “Open File” to load Data from Data Sheet of Wind Monitor(.xls file).The Open Dialog Box will be displayed as follow.

Open Dialog Box



Select the require Data File from File List and Click on “Open” button. After clicking “Open” button the data has been loaded internally by the Windrose application and “Excel Data Field Setting” frame will be displayed as follows.



In a Grid Column Index, Column Heading and Units will be displayed. Using this Grid user can identify Column Index form any Parameter.

Select Column Index for Date/Time, Wind Direction, Average Wind Speed from corresponding Dropdown Box.

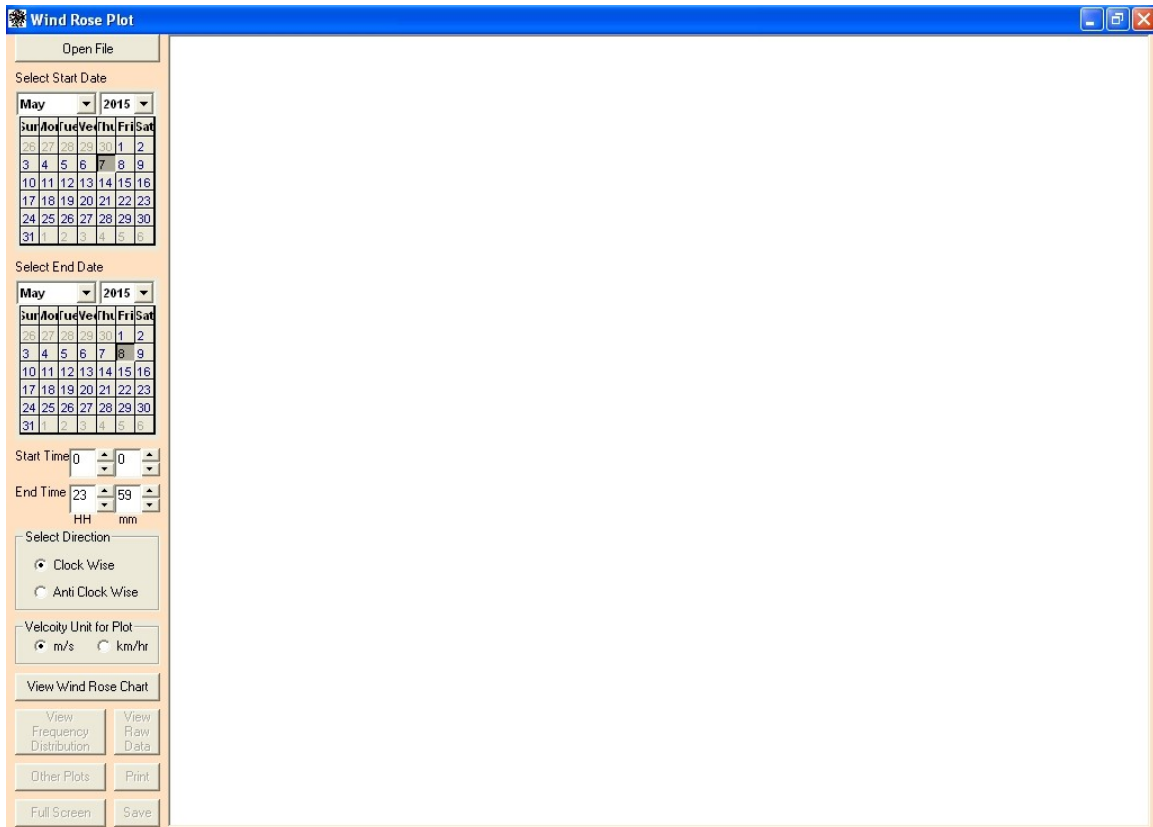
Select Required Parameters & Column Index to Draw Other Plots for Temperature(°C), RH(%), Dew Point(°C), Voltage(Volts),Barometric Pressure and Rainfall

Column Index can be selected for any parameter from corresponding Dropdown Box

Enter Company Name, Location and Remark in corresponding Text Box.

Click on “Accept Settings” button. After clicking this button “View Windrose Chart” button will be enabled.

Screen after the settings accepted and data has been loaded for Analysis will be displayed as follows.



If you want to Plot data and Analysis for whole Data Sheet or you don't want to specify date and time ranges then click on "View Wind Rose Plot" button

If you want to specify Date and Time range to View Windrose Plot then follow the follow steps

Select Start Date from Calendar Displayed below the "Select Start Date" label

Select End Date from Calendar Displayed below the "Select End Date" label

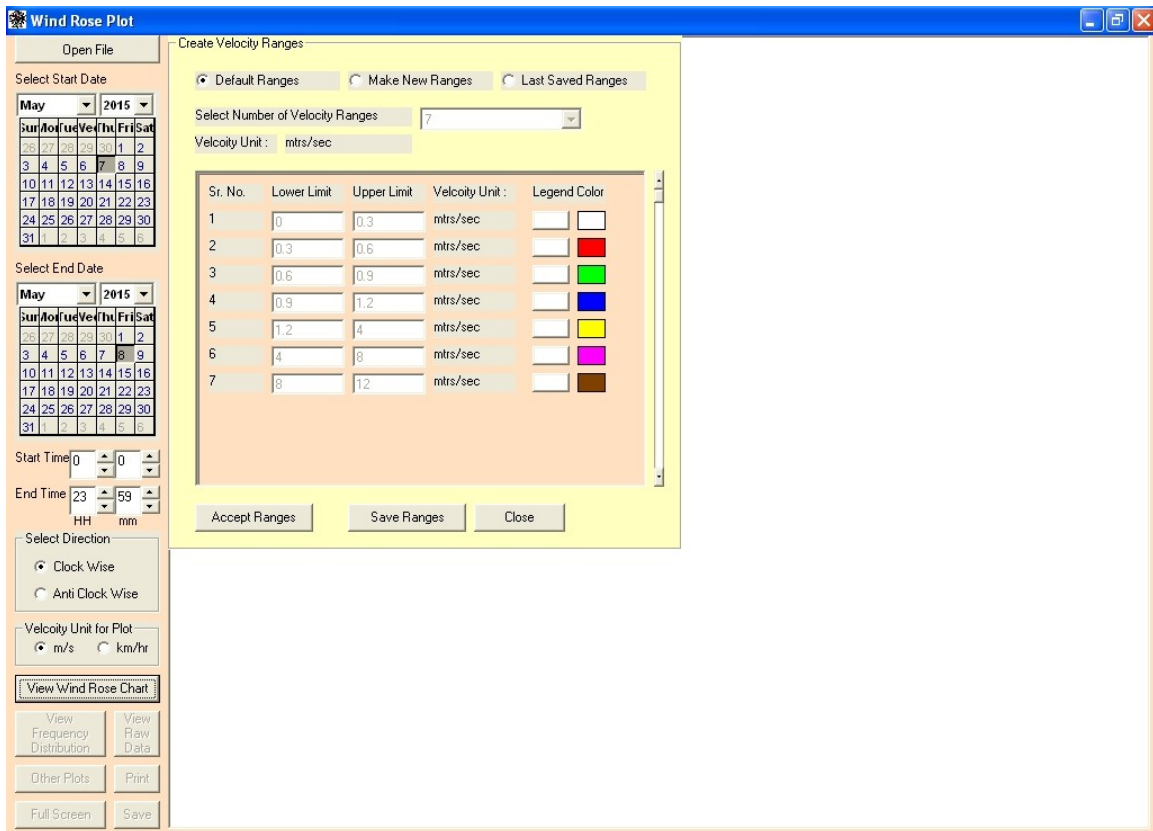
Enter hours and minutes in respective Text Boxes displayed in front of Start Time

Enter hours and minutes in respective Text Boxes displayed in front of End Time

Select Direction from "Clock Wise" or "Anti Clock Wise" option

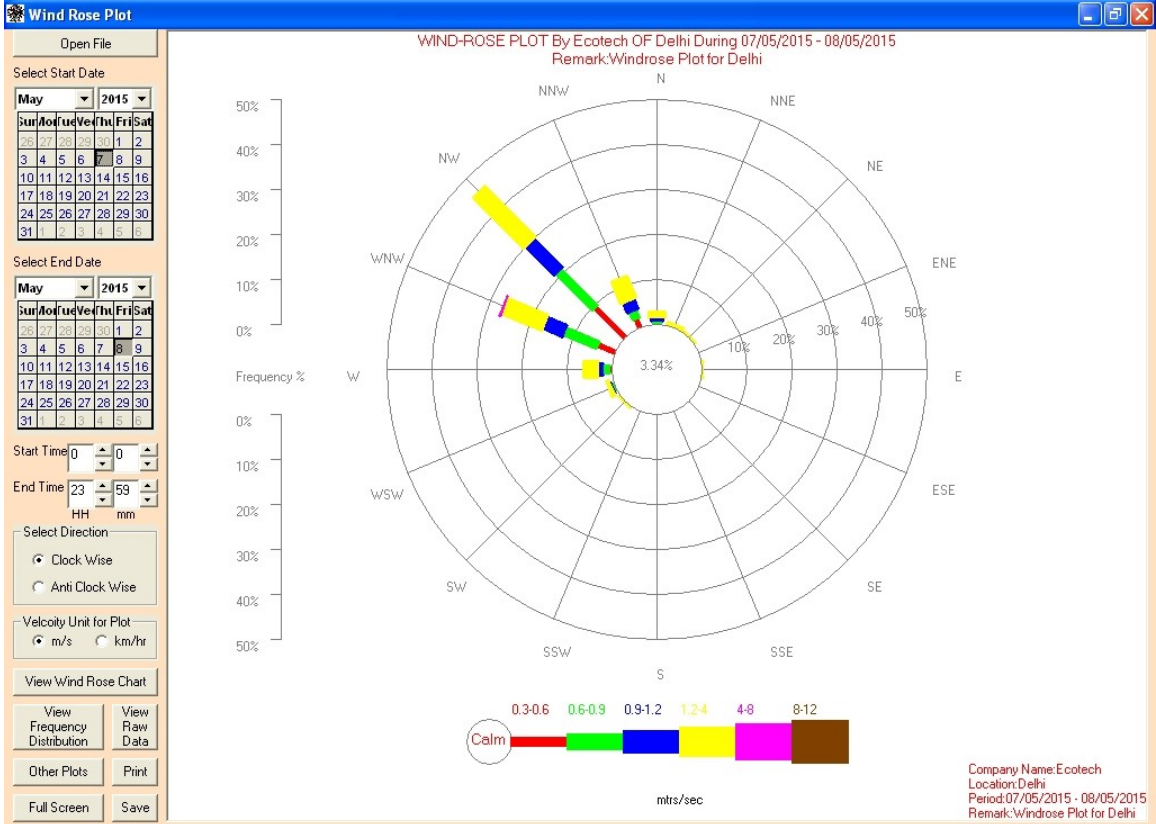
Select Velocity Unit for Plot from 'm/s' or "km/hr" option

Then click on "View Wind Rose Plot" button. After clicking "View Wind Rose Plot" button Create Velocity Ranges frame will be displayed as follows.



Click on Accept Ranges. The Windrose Plot will be displayed in Picture box as follow.

The View Frequency Distribution, View Raw Data, Other Plots, Print, Full Screen and Save buttons will be displayed.



Wind Rose Plot

Open File

Select Start Date

May 2015

Sun	Mon	Tue	Wed	Thu	Fri	Sat
26	27	28	29	30	1	2
3	4	5	6	7	8	9
10	11	12	13	14	15	16
17	18	19	20	21	22	23
24	25	26	27	28	29	30
31	1	2	3	4	5	6

Select End Date

May 2015

Sun	Mon	Tue	Wed	Thu	Fri	Sat
26	27	28	29	30	1	2
3	4	5	6	7	8	9
10	11	12	13	14	15	16
17	18	19	20	21	22	23
24	25	26	27	28	29	30
31	1	2	3	4	5	6

Start Time: 00:00

End Time: 23:59

Select Direction: Clock Wise Anti Clock Wise

Velocity Unit for Plot: m/s km/hr

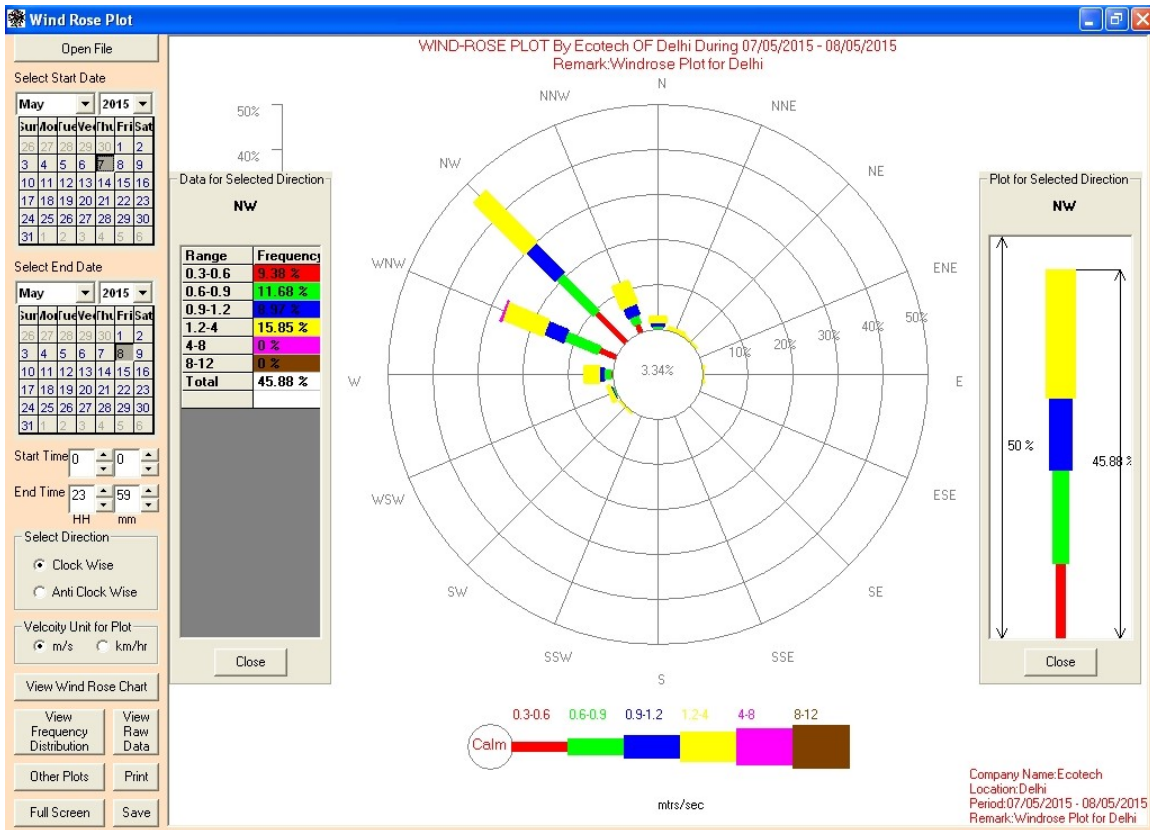
View Wind Rose Chart

View Frequency Distribution | View Raw Data

Other Plots | Print

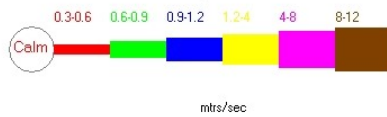
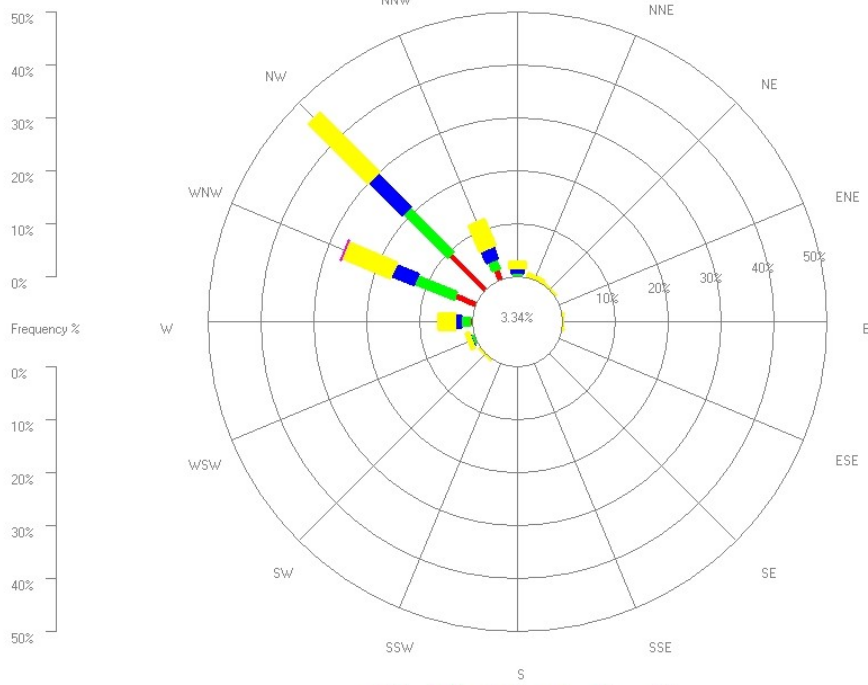
Full Screen | Save

Click on Direction Label to view Data and Plot for any direction.



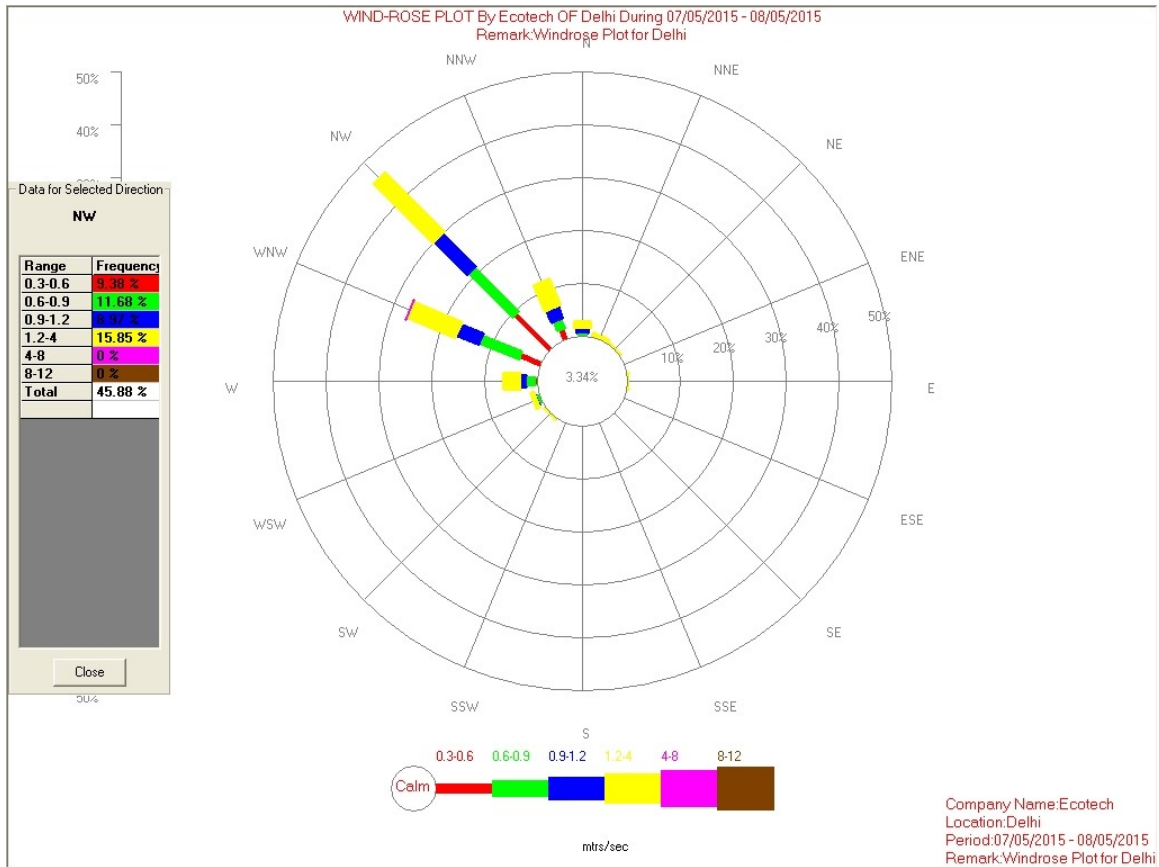
Click on “Full Screen” button to view Windrose Plot in Full Screen. After clicking “Full Screen” the Full Screen will be displayed as follows.

WIND-ROSE PLOT By Ecotech OF Delhi During 07/05/2015 - 08/05/2015
 Remark:Windrose Plot for Delhi



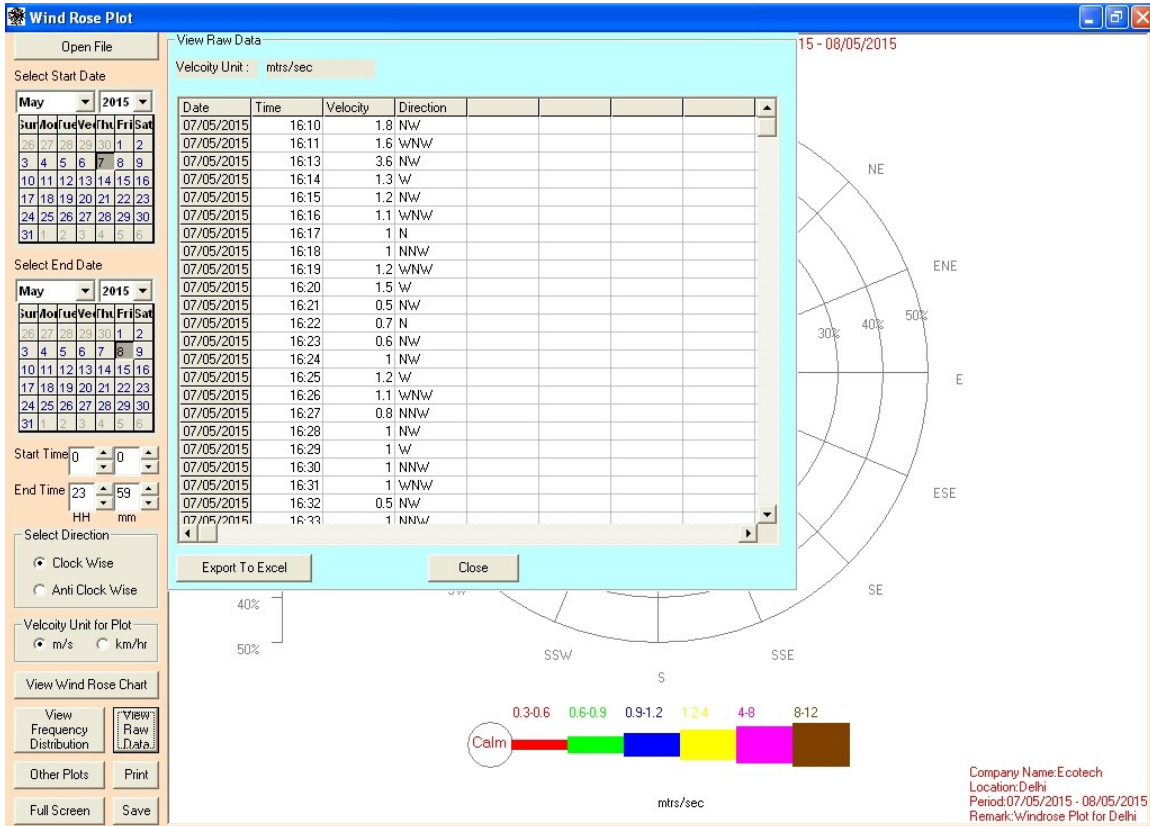
Company Name:Ecotech
 Location:Delhi
 Period:07/05/2015 - 08/05/2015
 Remark:Windrose Plot for Delhi

Click on Direction Label to view Data and Plot for any direction.



Double Click on picture box to go back to main screen.

To view Raw Data click on “View Raw Data” button. After clicking this button the Raw Data Table will be displayed as follows.



Click on “Export To Excel” button to export Raw Data to Excel file. After clicking this button the Save As dialog box will be displayed as follows.

15 - 08/05/2015

Velocity Unit : mtrs/sec

Date	Time	Velocity	Direction
07/05/2015	16:10	1.8	NW
07/05/2015	16:11	1.6	WNW
07/05/2015	16:13	3.6	NW
07/05/2015	16:14	1.3	W
07/05/2015	16:15	1.2	NW
07/05/2015	16:16	1.1	WNW

Save in: Windrose_WindMonitor_5Apr17

- My Recent Documents
- Desktop
- My Documents
- My Computer
- My Network Places

File name:

Save as type: Excel files (*.xls)

Save Cancel

View Wind Rose Chart

View Frequency Distribution | View Raw Data

Other Plots | Print

Full Screen | Save

0.3-0.6 0.6-0.9 0.9-1.2 1.2-4 4-8 8-12

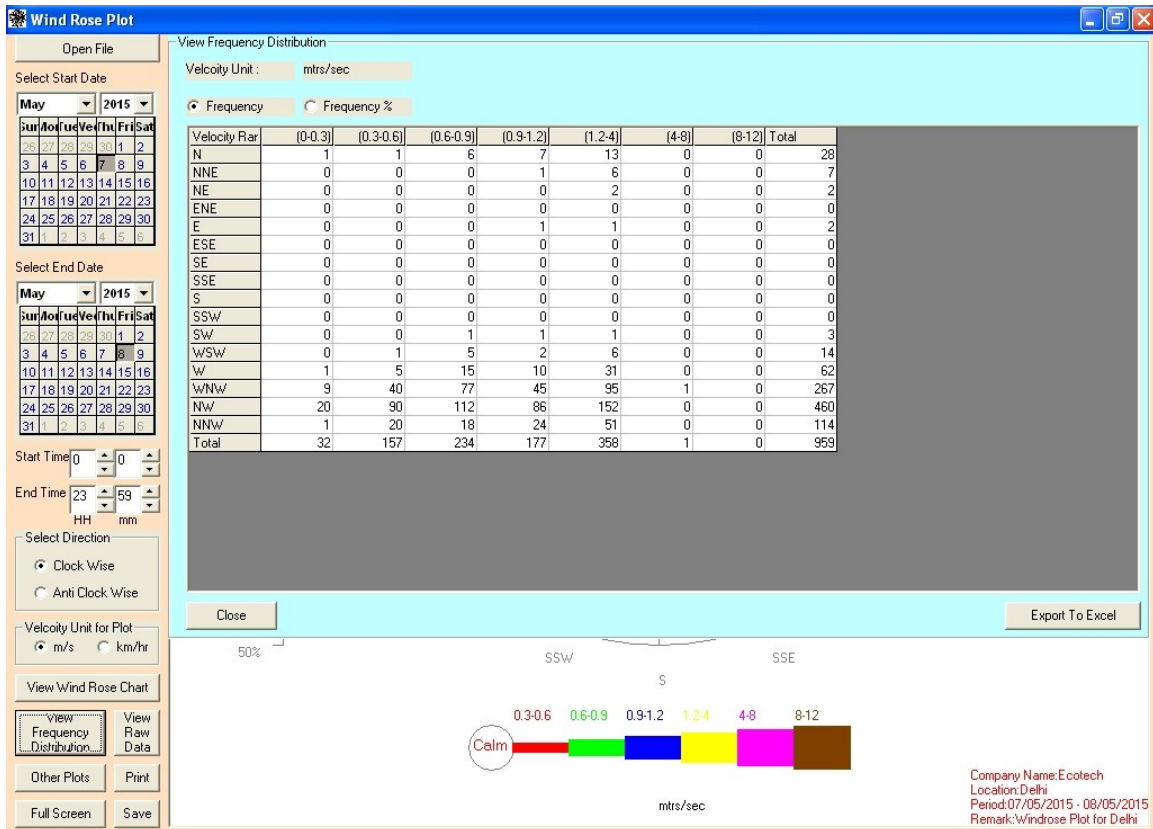
Calm

mtrs/sec

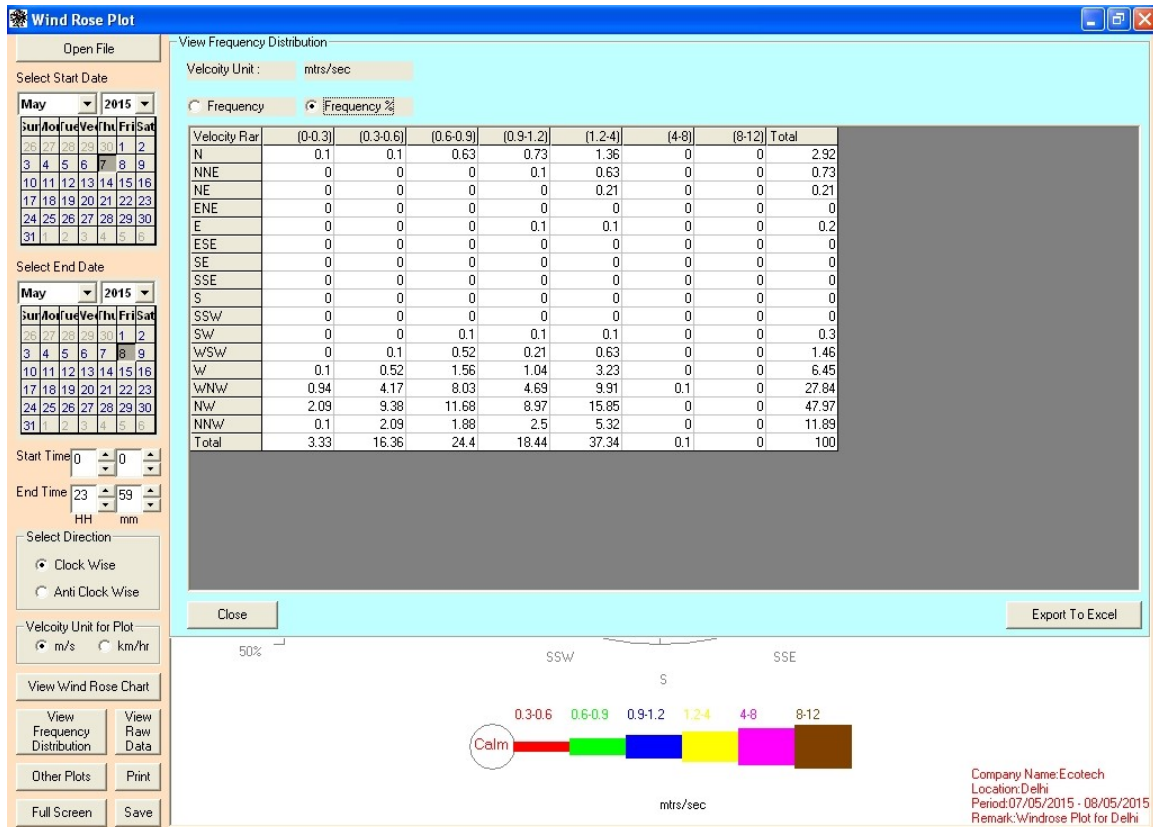
Company Name: Ecotech
 Location: Delhi
 Period: 07/05/2015 - 08/05/2015
 Remark: Windrose Plot for Delhi

Enter Excel file name in File name box and click on Save button. After clicking Save button the Raw Data will be Export to Excel.

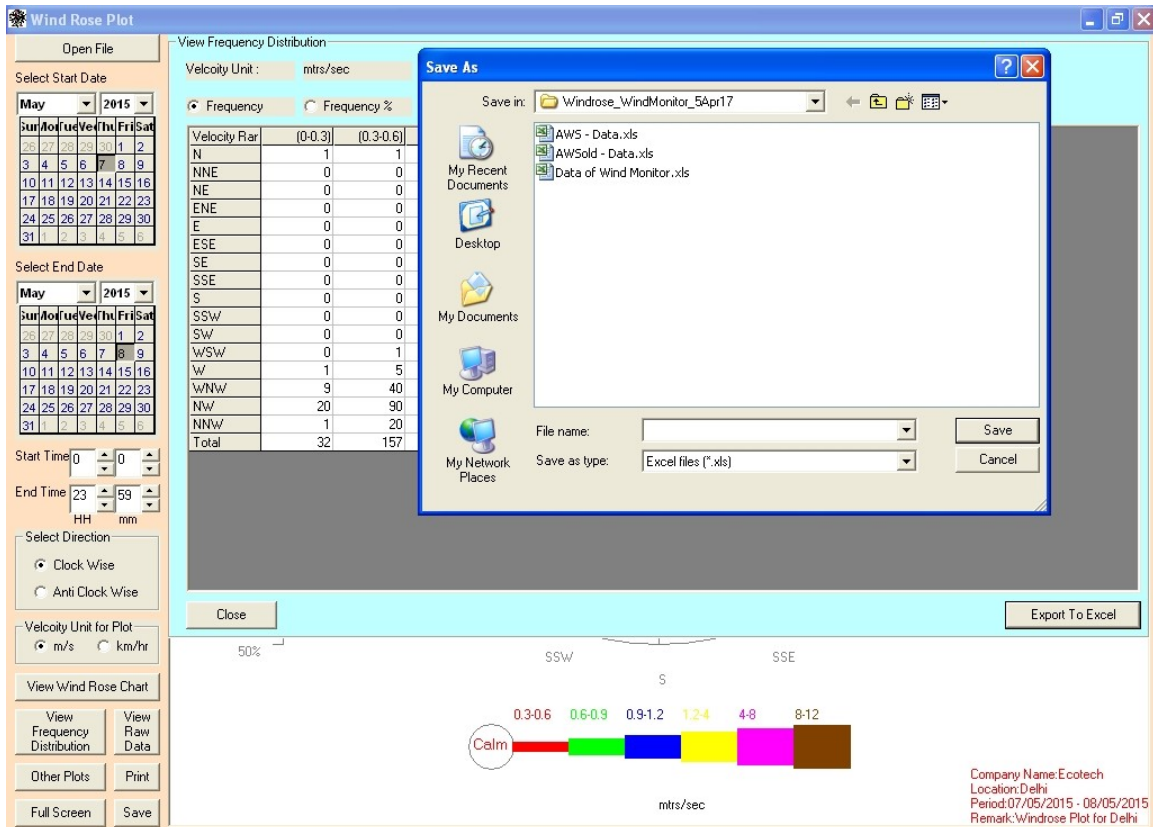
Click on “View Frequency Distribution” button to view Frequency distribution. The frame will be displayed as follows



Click on “Frequency%.” Option the Data will be displayed as follows.



Click on “Export To Excel” button to export Frequency Distribution Data to Excel file. After clicking this button the Save As dialog box will be displayed as follows.

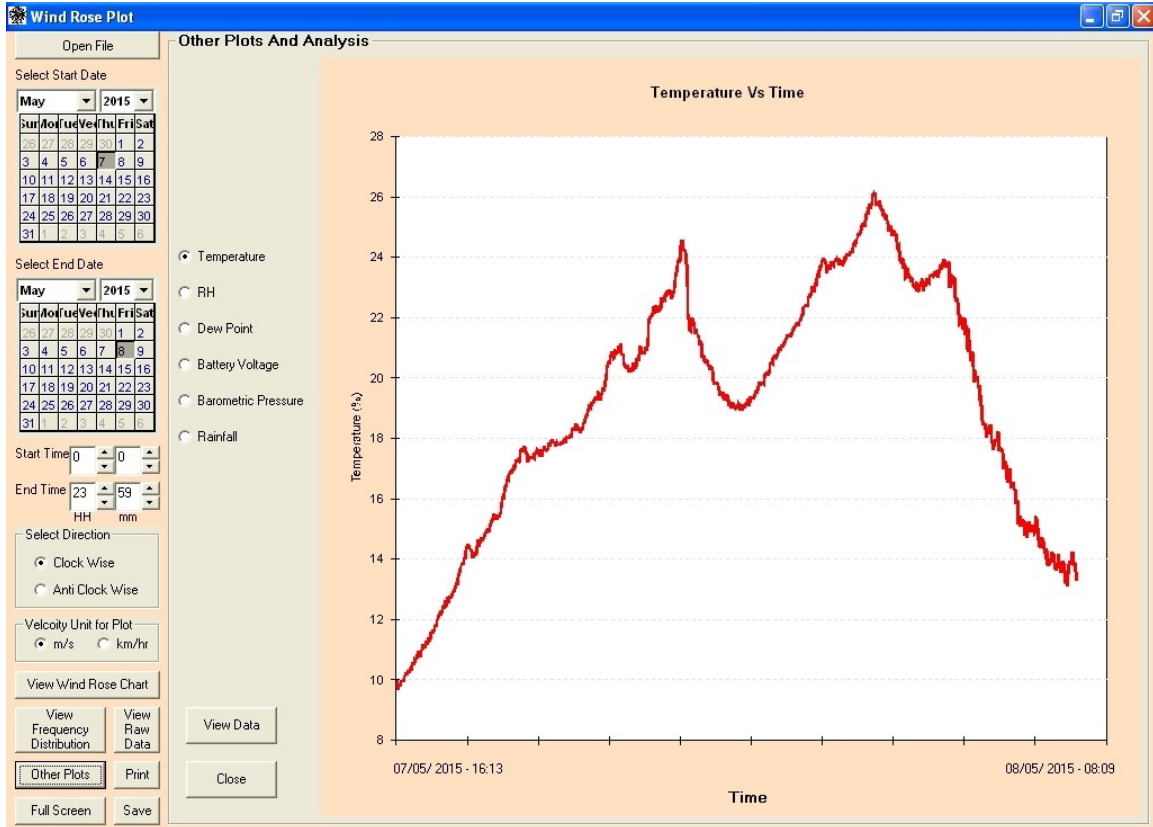


Enter Excel file name in File name box and click on Save button. After clicking Save button the Frequency Distribution Data will be Export to Excel.

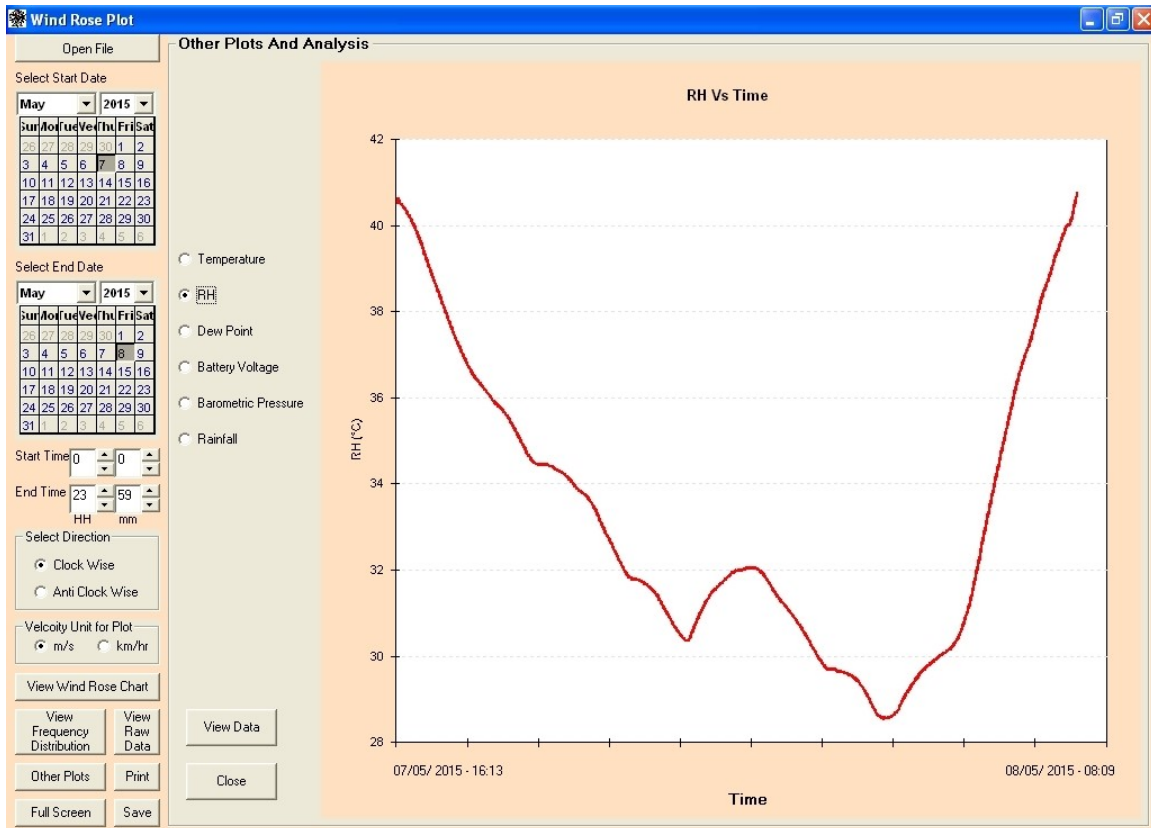
Click on “Close” button to Close this frame

Click on “Other Plots” button to view Other Plots. After clicking this button the “Other Plots And Analysis” frame will be displayed.

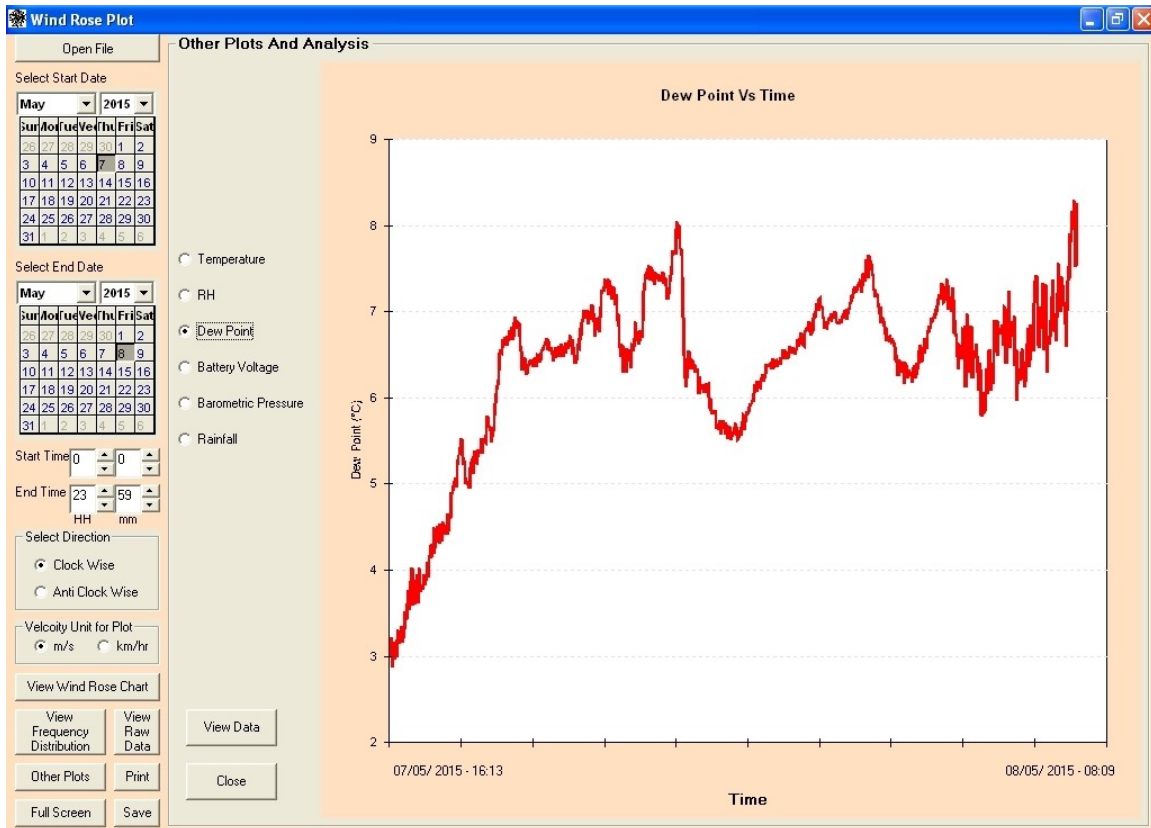
Click on “Temperature” option to view Temperature Vs Time Plot. The Temperature Vs Time Plot will be displayed as follows.



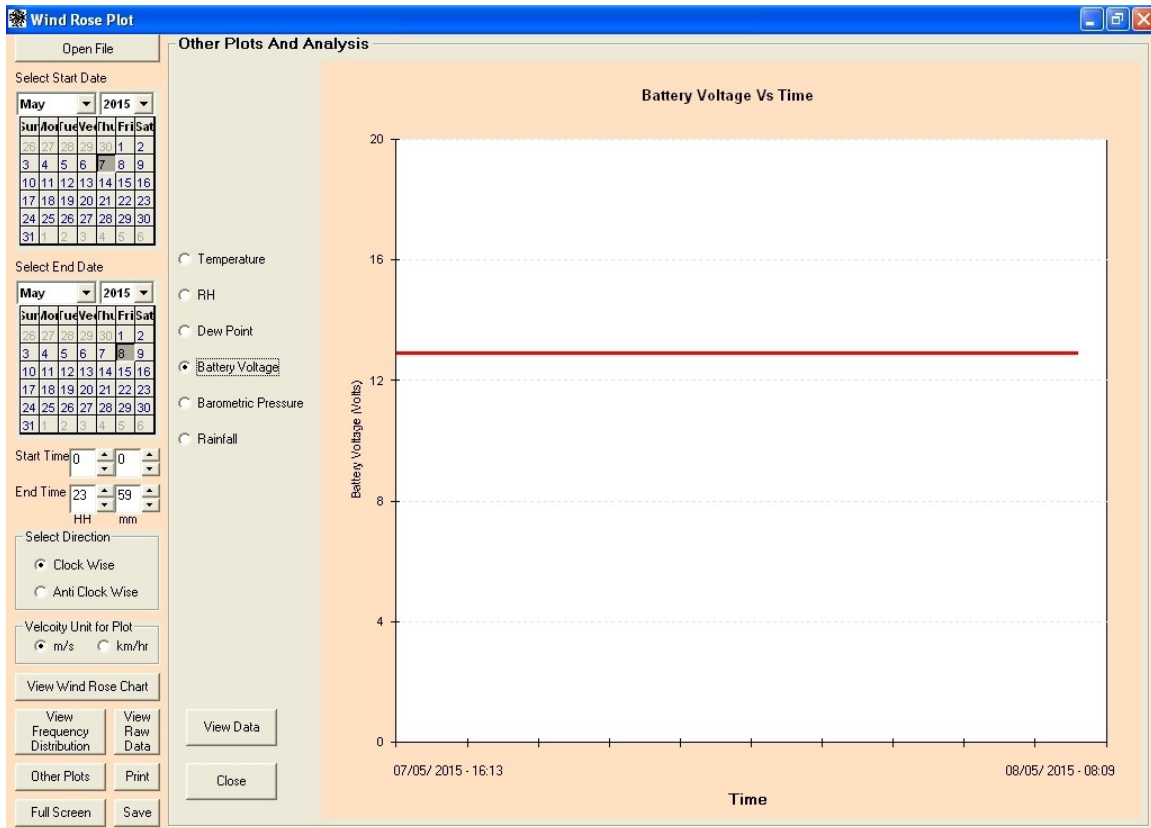
Click on “RH” option to view RH Vs Time Plot. The RH Vs Time Plot will be displayed as follows.



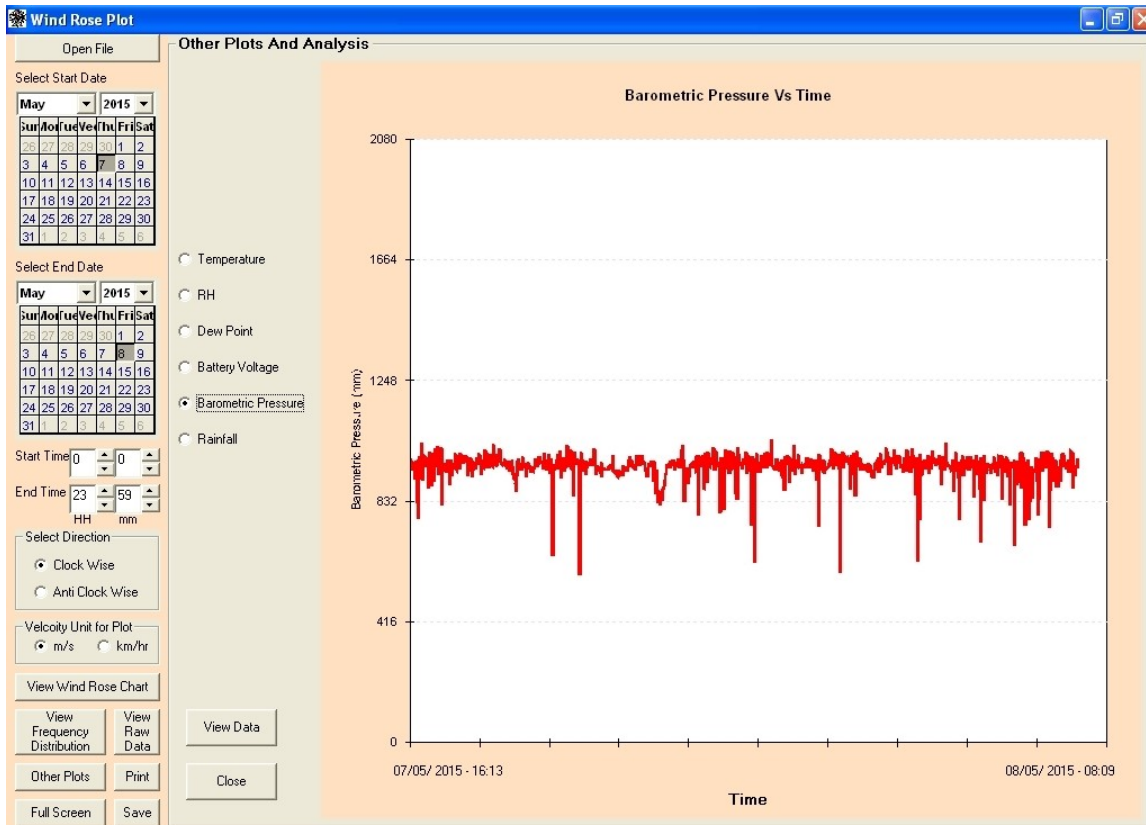
Click on “Dew Point” option to view Dew Point Vs Time Plot. The Dew Point Vs Time Plot will be displayed as follows.



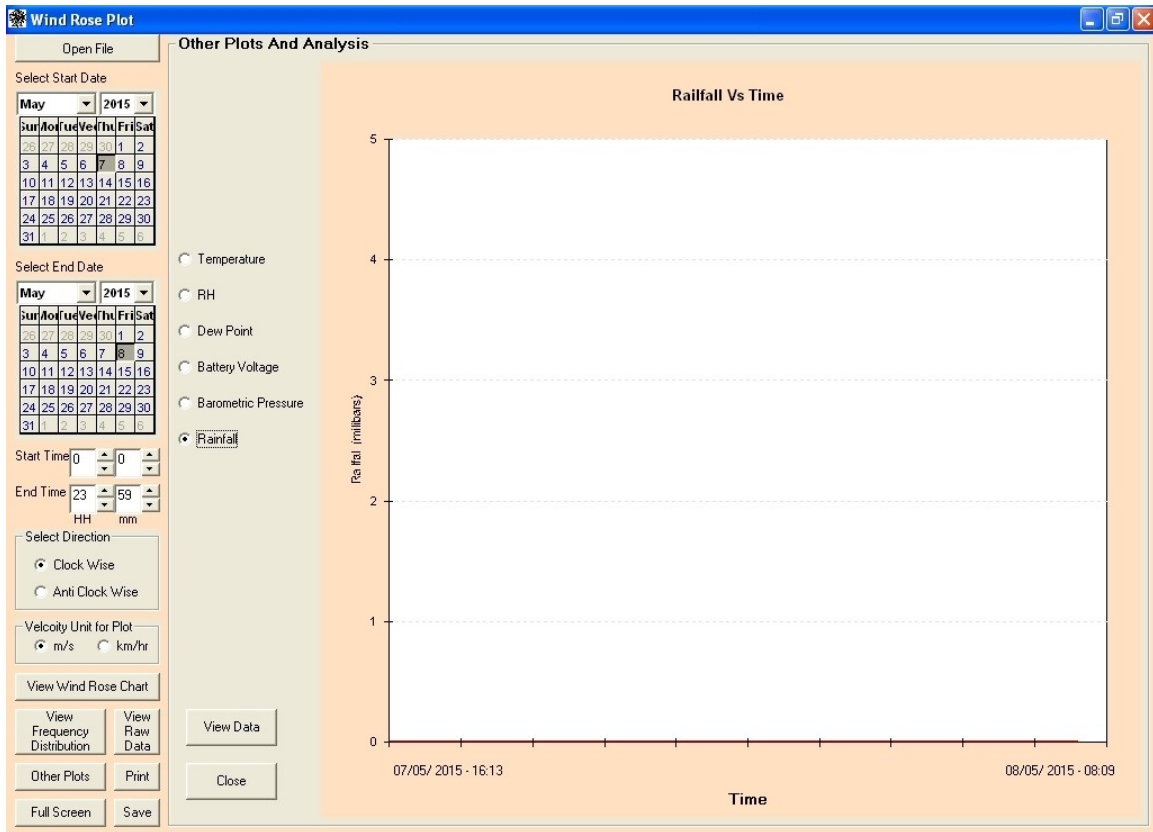
Click on “Battery Voltage” option to view Battery Voltage Vs Time Plot. The Battery Voltage Vs Time Plot will be displayed as follows.



Click on “Barometric Pressure” option to view Barometric Pressure Vs Time Plot. The Barometric Pressure Vs Time Plot will be displayed as follows.



Click on “Rainfall” option to view Rainfall Vs Time Plot. The Rainfall Vs Time Plot will be displayed as follows.



Click on “View Data” button on “Other Plot and Analysis” Frame to view Temperature, RH, Dew Point, Battery Voltage, Barometric Pressure and Rainfall Data. The Data Table will be display as follows.

Wind Rose Plot

Open File

Other Plots And Analysis

Select Start Date

May 2015

Select End Date

May 2015

Start Time: 00:00

End Time: 23:59

Select Direction: Clock Wise, Anti Clock Wise

Velocity Unit for Plot: m/s, km/hr

View Wind Rose Chart

View Frequency Distribution, View Raw Data

Other Plots, Print, Full Screen, Save

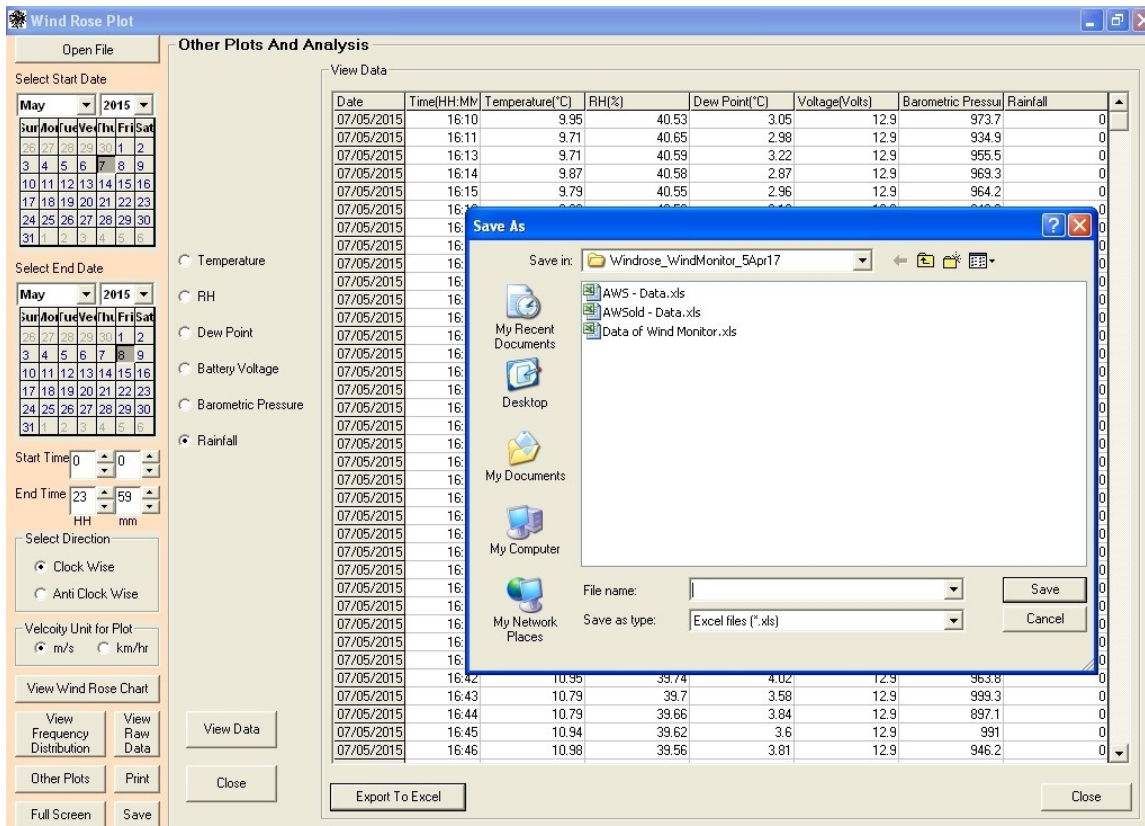
View Data

Date	Time(HH:MM)	Temperature(°C)	RH(%)	Dew Point(°C)	Voltage(Volts)	Barometric Pressur	Rainfall
07/05/2015	16:10	9.95	40.53	3.05	12.9	973.7	0
07/05/2015	16:11	9.71	40.65	2.98	12.9	934.9	0
07/05/2015	16:13	9.71	40.59	3.22	12.9	955.5	0
07/05/2015	16:14	9.87	40.58	2.87	12.9	969.3	0
07/05/2015	16:15	9.79	40.55	2.96	12.9	964.2	0
07/05/2015	16:16	9.86	40.52	3.16	12.9	949.2	0
07/05/2015	16:17	9.94	40.5	2.96	12.9	905.8	0
07/05/2015	16:18	9.94	40.48	3.01	12.9	951.7	0
07/05/2015	16:19	9.94	40.47	3.01	12.9	969.5	0
07/05/2015	16:20	9.94	40.45	2.98	12.9	822.2	0
07/05/2015	16:21	10.02	40.42	3.19	12.9	955.4	0
07/05/2015	16:22	10.1	40.4	3.3	12.9	768.3	0
07/05/2015	16:23	10.18	40.38	3.16	12.9	974	0
07/05/2015	16:24	10.18	40.36	3.14	12.9	984.5	0
07/05/2015	16:25	10.18	40.32	3.22	12.9	903.6	0
07/05/2015	16:26	10.25	40.3	3.2	12.9	924.9	0
07/05/2015	16:27	10.25	40.27	3.35	12.9	1032.9	0
07/05/2015	16:28	10.25	40.24	3.15	12.9	967.3	0
07/05/2015	16:29	10.25	40.22	3.35	12.9	898.9	0
07/05/2015	16:30	10.33	40.18	3.21	12.9	992.9	0
07/05/2015	16:31	10.33	40.16	3.31	12.9	947.7	0
07/05/2015	16:32	10.45	40.12	3.51	12.9	952.5	0
07/05/2015	16:33	10.57	40.09	3.48	12.9	986.5	0
07/05/2015	16:34	10.48	40.05	3.42	12.9	958.5	0
07/05/2015	16:35	10.56	40.01	3.61	12.9	956.3	0
07/05/2015	16:36	10.68	39.99	3.7	12.9	900.5	0
07/05/2015	16:37	10.64	39.95	3.77	12.9	875	0
07/05/2015	16:38	10.68	39.91	3.53	12.9	988.3	0
07/05/2015	16:39	10.71	39.87	3.75	12.9	1001.9	0
07/05/2015	16:40	10.83	39.82	3.87	12.9	990.9	0
07/05/2015	16:41	10.87	39.79	3.95	12.9	881.6	0
07/05/2015	16:42	10.95	39.74	4.02	12.9	963.8	0
07/05/2015	16:43	10.79	39.7	3.58	12.9	999.3	0
07/05/2015	16:44	10.79	39.66	3.84	12.9	897.1	0
07/05/2015	16:45	10.94	39.62	3.6	12.9	991	0
07/05/2015	16:46	10.98	39.56	3.81	12.9	946.2	0

Export To Excel

Close

Click on “Export Data” button To Export Other Plots And Analysis Data to Excel File. After clicking on “Export Data” button the Save As dialog box will be displayed as follows.

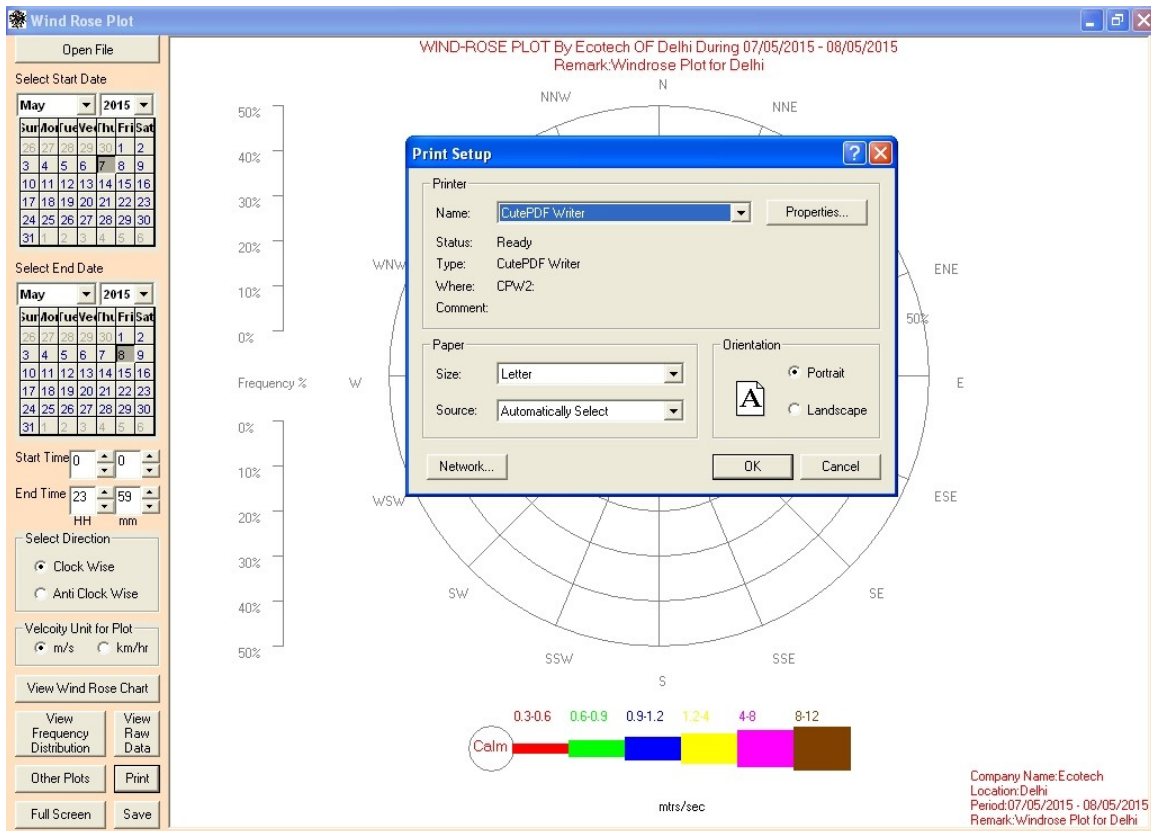


Enter Excel File Name in File Name box and click on Save button on Save As dialog box. After clicking Save the grid data will be Export to Excel File.

Click on “Close” button on View Data frame to close Data Table frame.

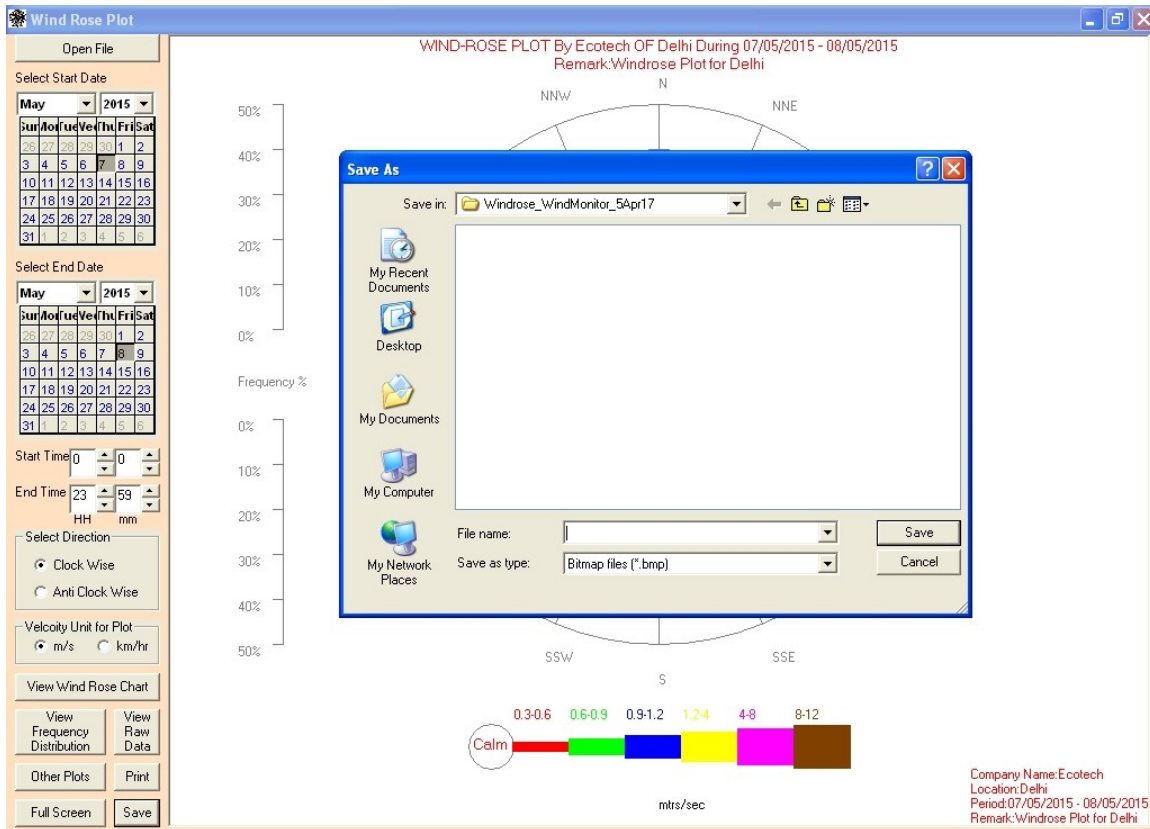
Click on “Close” button on “Other Plot And Analysis” frame to close “Other Plot And Analysis” frame.

Click on “Print” button to Print Windrose Plot on Paper. After clicking “Print” button the Print Setup dialog box will be display as follows.



Select Printer Name from dropdown box and click on “OK” button to confirm printing. After clicking on “OK” button you will get print out of Windrose Plot on paper.

Click on “Save” to Save Windrose Plot as Bitmap Image. After clicking “Save” button the Save As dialog box will be display as follows.



Enter the file name in File Name box and click on Save button on Save As dialog box. After clicking Save button the Windrose Plot will be saved as a Bitmap Image which can be view and print on paper using a picture or image viewer software.

Click on close button “X” on Main Window to close Windrose Software.